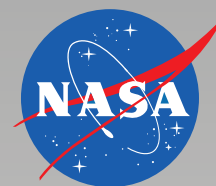


USGS, Earth Resources Observation and Science  
(EROS) Center Sioux Falls, South Dakota

National Aeronautics and  
Space Administration



## NASA's Land Processes DAAC (LP DAAC)

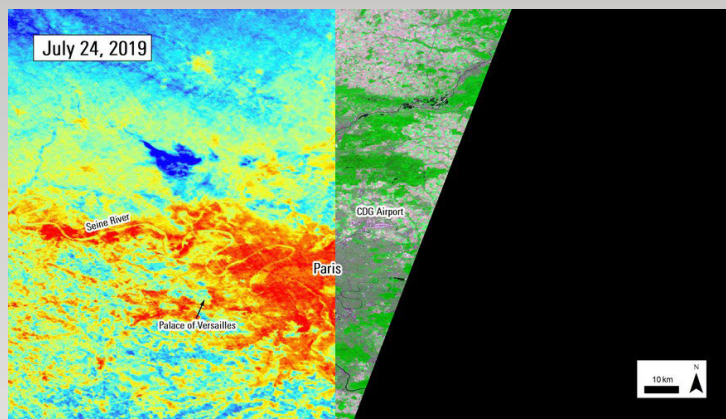
Surface Reflectance, Land Cover, Elevation,  
Land Surface Temperature, Evapotranspiration,  
Thermal Anomalies, Fire, and Vegetation Indices

LP DAAC is located at the U S Department of Interior, U S Geological Survey (USGS) ( Earth Resources Observation and Science (EROS) Center in Sioux Falls, SD LP DAAC ingests, processes, archives, and distributes data products related to land processes. These data are crucial to the investigation, characterization, and monitoring of biological, geological, hydrological, ecological, and related conditions and processes

**Chris Torbert, LP DAAC Manager (Acting)**

**Tom Maersperger, LP DAAC Scientist**

- Core Data Products include: Advanced Spaceborne Thermal Emission and Reflection Radiometer (ASTER) from NASA's Terra Earth Observing System (EOS) satellite, Moderate Resolution Imaging Spectroradiometer (MODIS) data from NASA's Terra and Aqua EOS satellites, Visible Infrared Imaging Radiometer Suite (VIIRS) from from the joint NASA/NOAA Suomi National Polar-orbiting Partnership (Suomi NPP) satellite, ECOsystem Spaceborne Thermal Radiometer Experiment on Space Station (ECOSTRESS) from the International Space Station, and Global Ecosystem Dynamics Investigation (GEDI) data from the International Space Station.
- Additional products include NASA's Making Earth System Data Records for Use in Research



ISS ECOSTRESS 70-meter (m) Land Surface Temperature data (left) over Paris, France during the late July 2019 heatwave, shown over a Terra ASTER Precision Terrain Corrected 15-m natural color composite image (Right) of Paris, France.

Environments (MEaSURES) collaborations and approved data products created by the research Community.

- Provide tools and services for discovery and analysis of NASA's land cover and land use data, including: the LP DAAC Data Pool, and the Application for Extracting and Exploring Analysis Ready Samples (AppEEARS).

**Just over 3.2 petabytes in the archive by the end of FY2019.**

**Over 4 .1 petabytes of data distributed to nearly 169,000 users during FY2019.**



**Land Processes DAAC**  
EROS Center  
47914 252nd Street  
Sioux Falls, SD 57198-0001  
605-594- 6116, 1 866 573 3222 (toll free)  
<https://lpdaac.usgs.gov>

**LP DAAC**

earthdata.nasa.gov