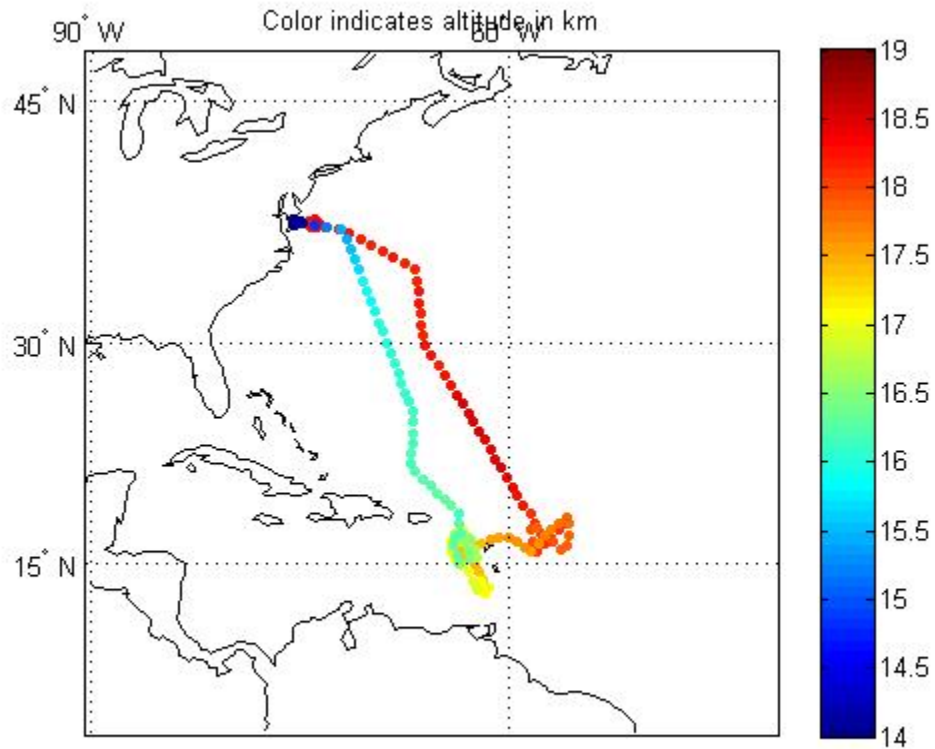

Table of Contents

.....	1
Flight Path with Altitude	1
Flight Path with Time	2
MERRA Comparisons	2
Precipitable Water Vapor	2
Temperature with MERRA	4
Absolute Humidity with MERRA	7
Relative Humidity with MERRA	10
Drosonde comparisons	12
Drosonde locations	12
Temperature with Drosondes	12
Absolute Humidity with Drosondes	12
Relative Humidity with Drosondes	12
All Drosonde Comparisons	12
Retrieval Quality Flag Statistics	12
Flight Imagery	14

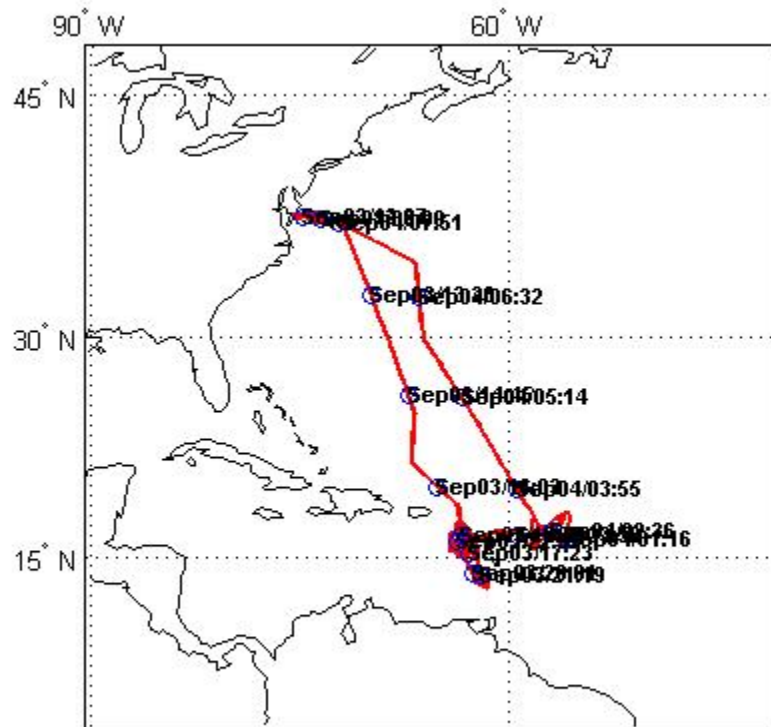
Warning: Closing open netCDF file handles.

Reading: HAMSR_L2_20130903T034600_20130904T020933_v01.nc

Flight Path with Altitude



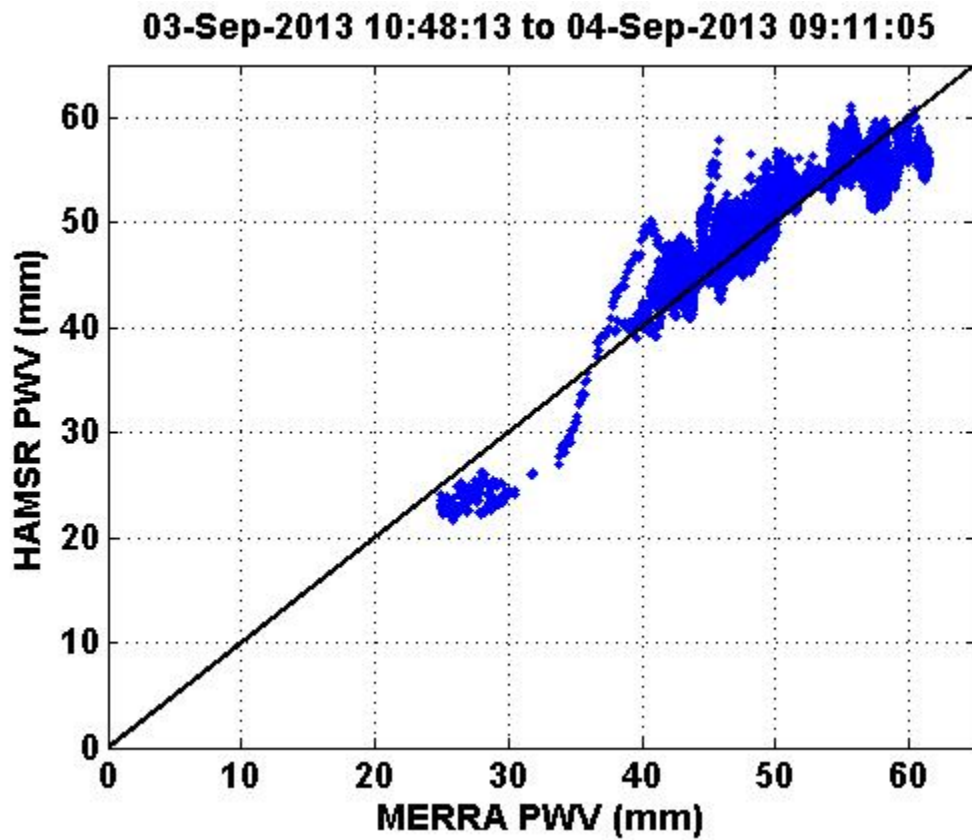
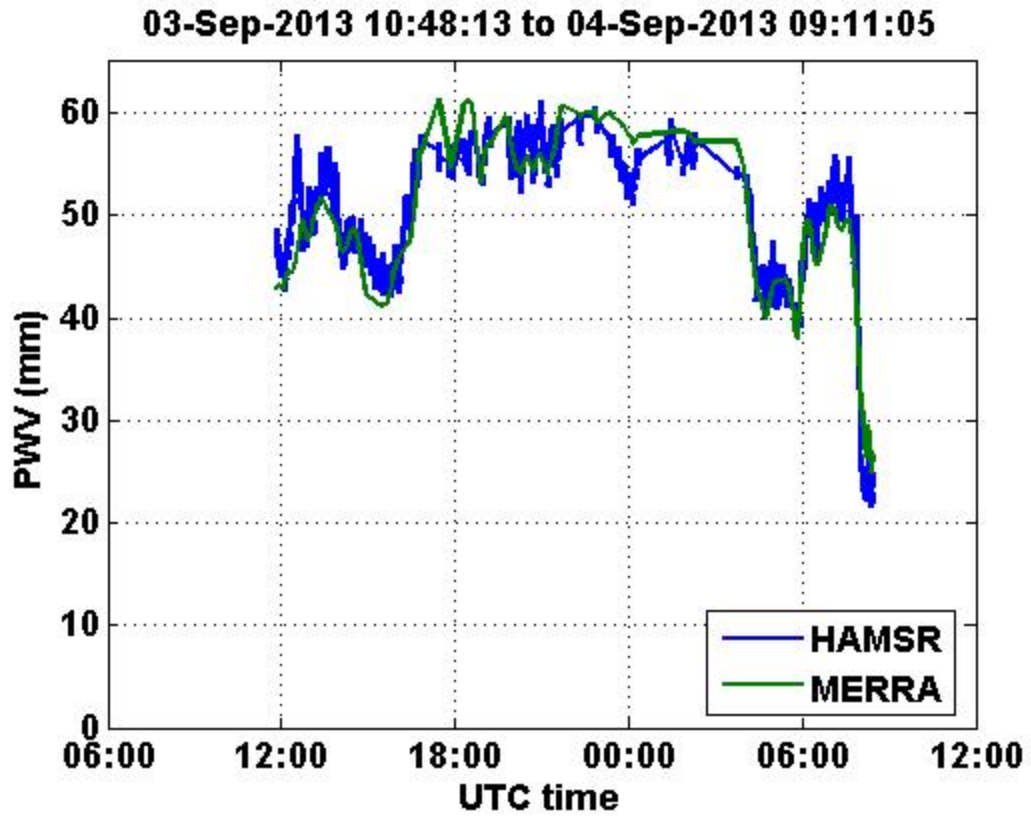
Flight Path with Time



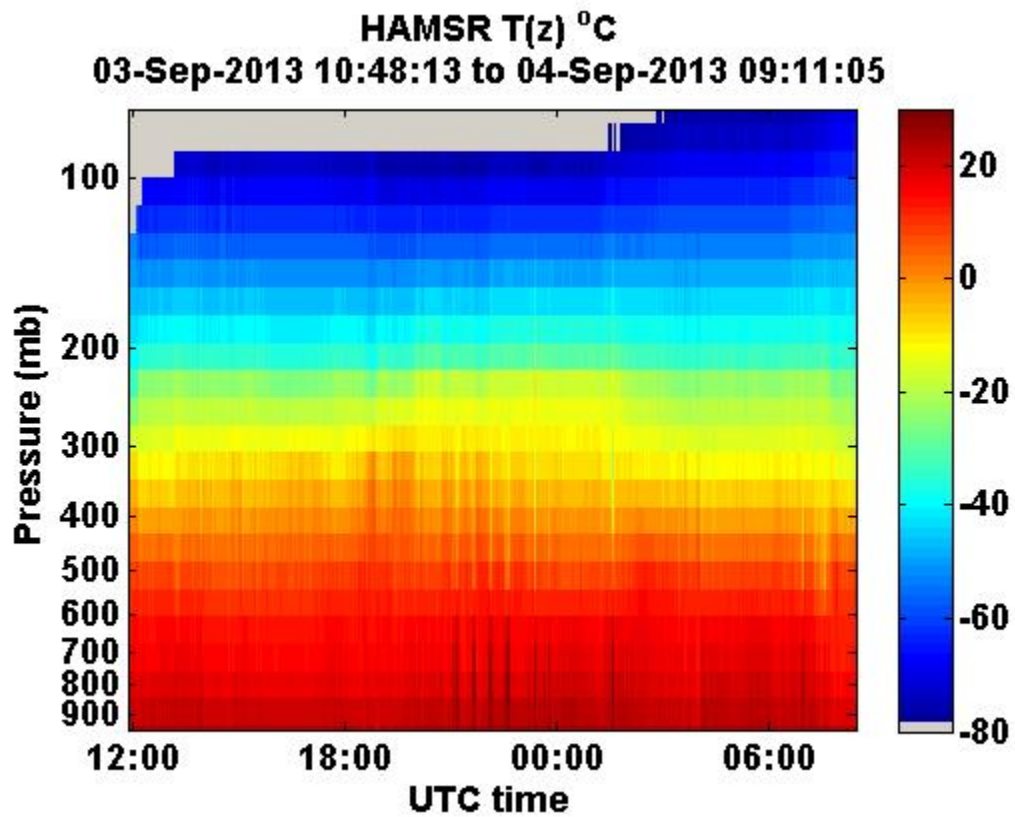
MERRA Comparisons

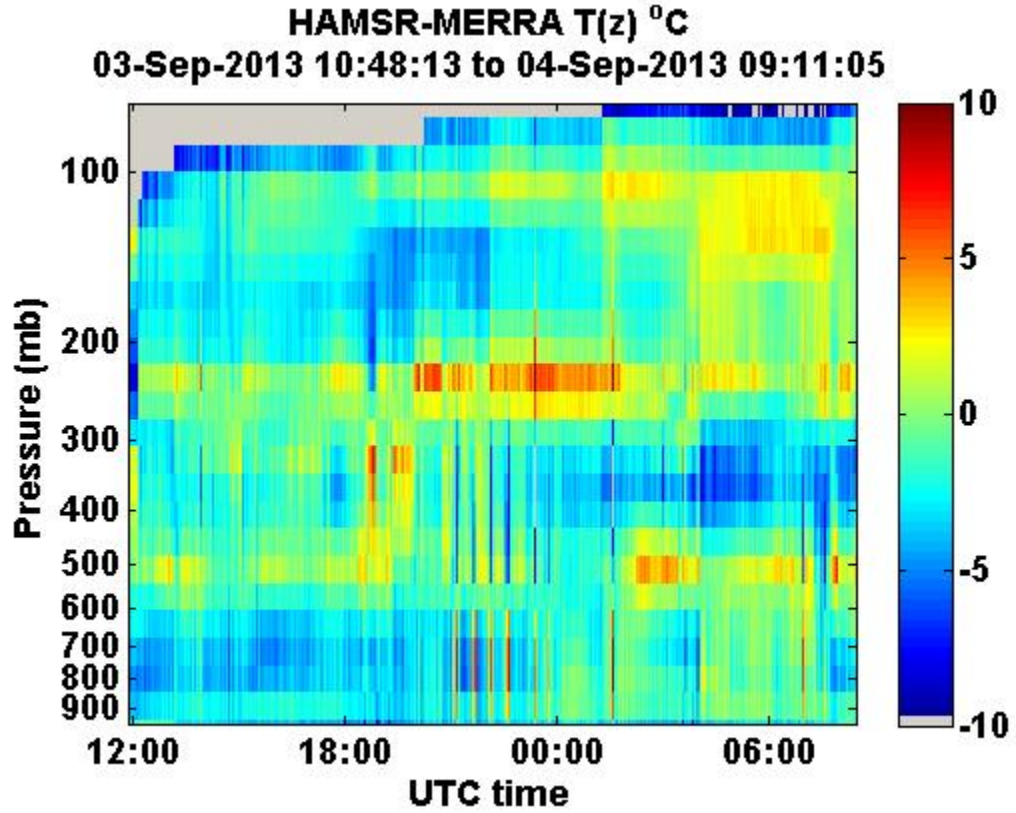
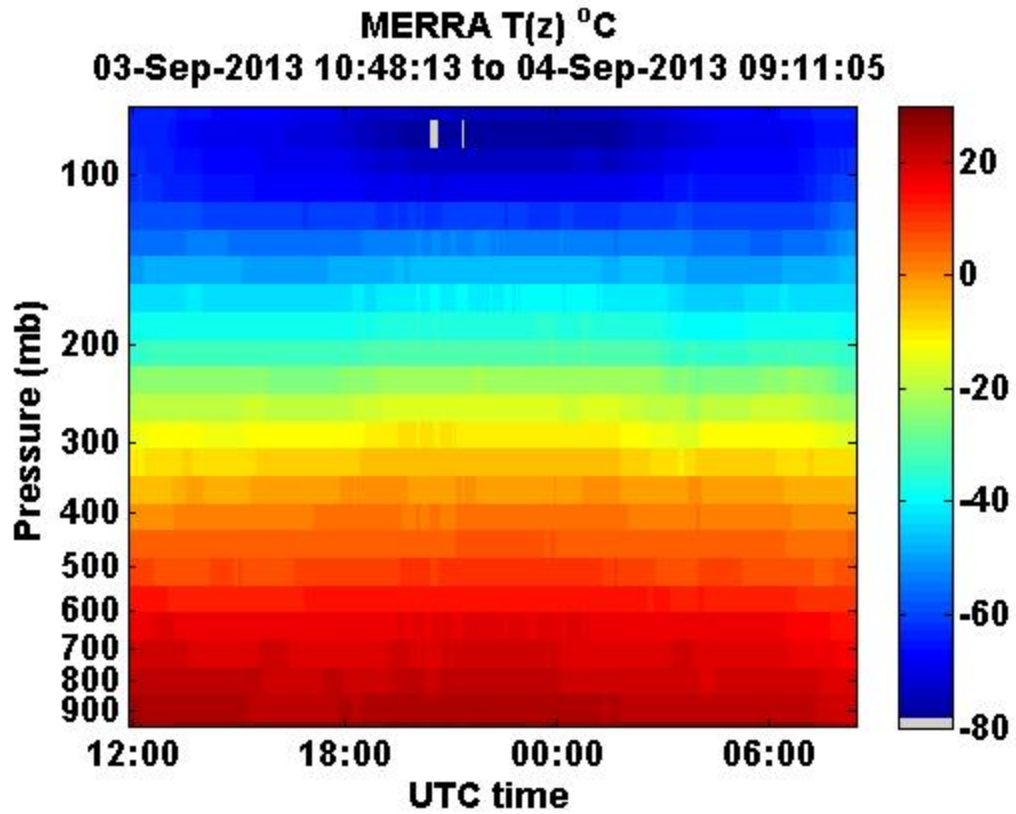
Precipitable Water Vapor

Mean: 0.62201 mm
StdDev: 2.6908 mm

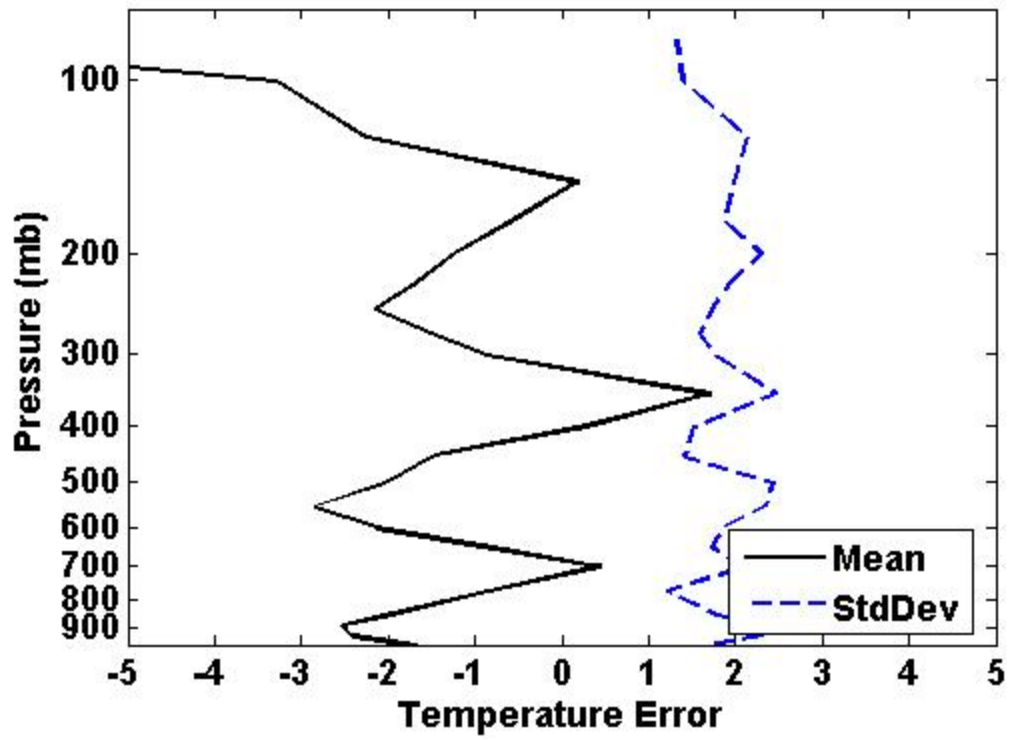


Temperature with MERRA

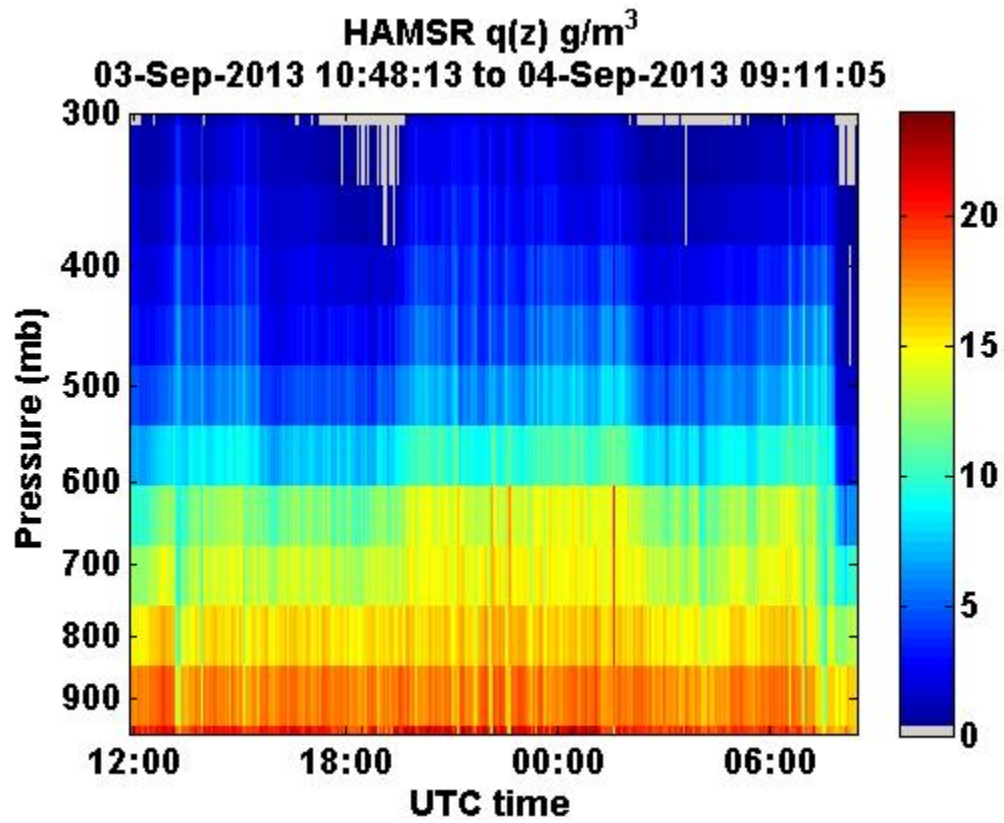


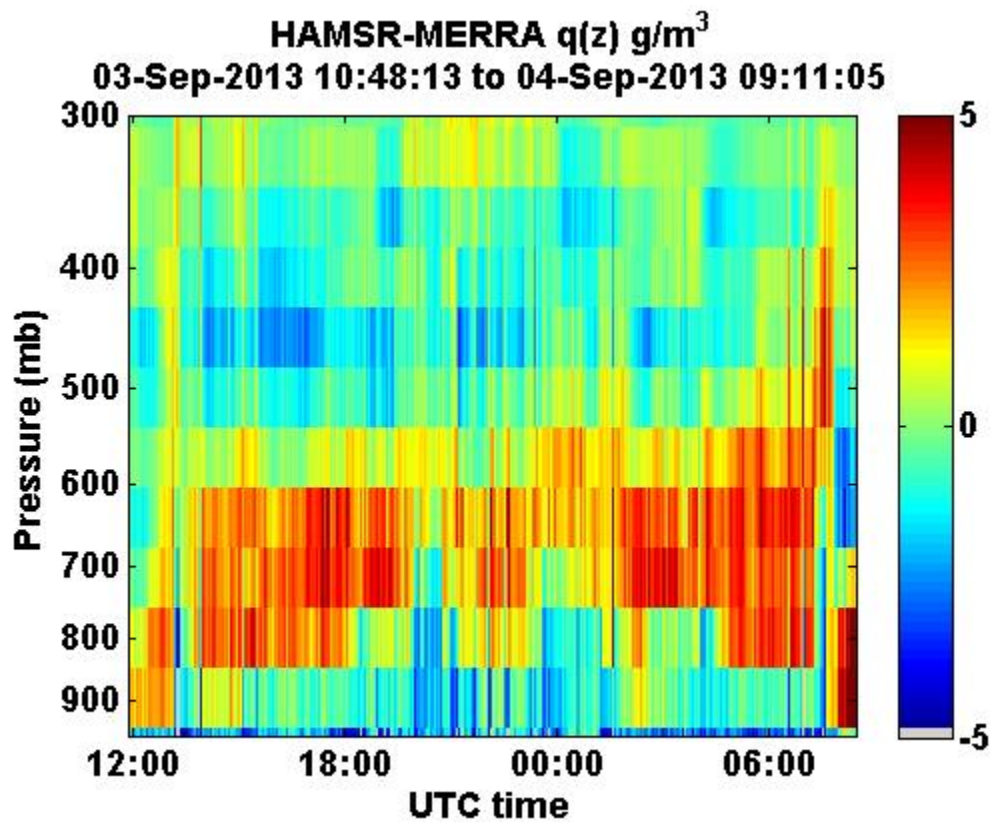
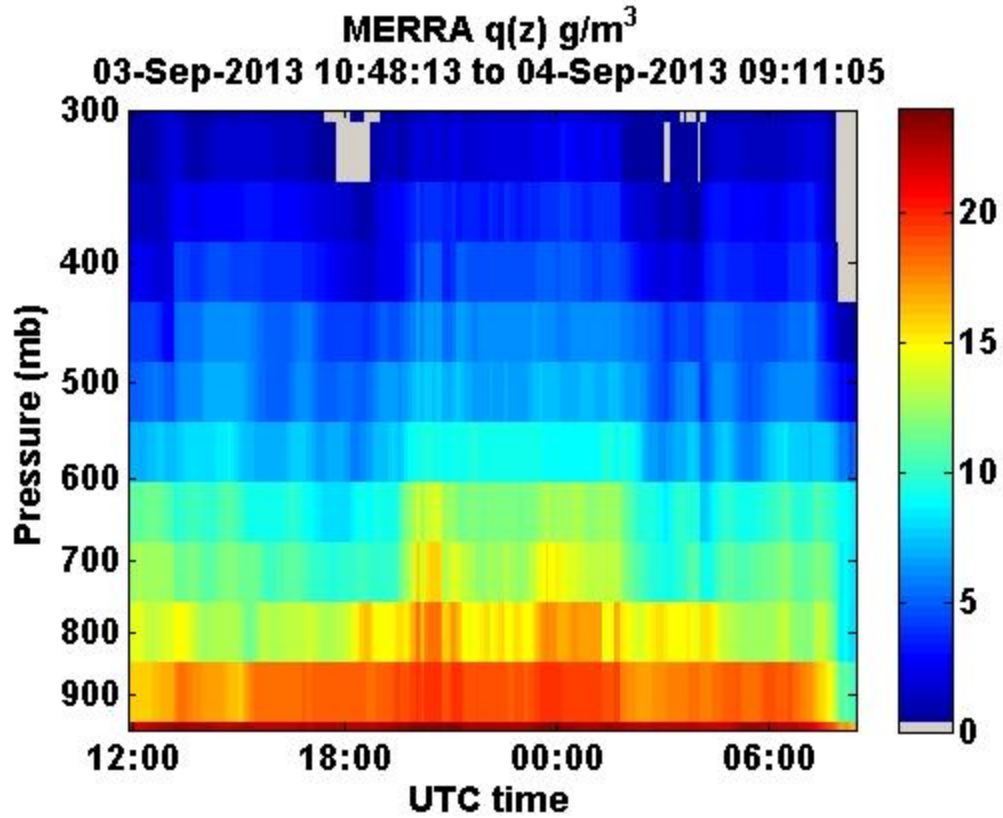


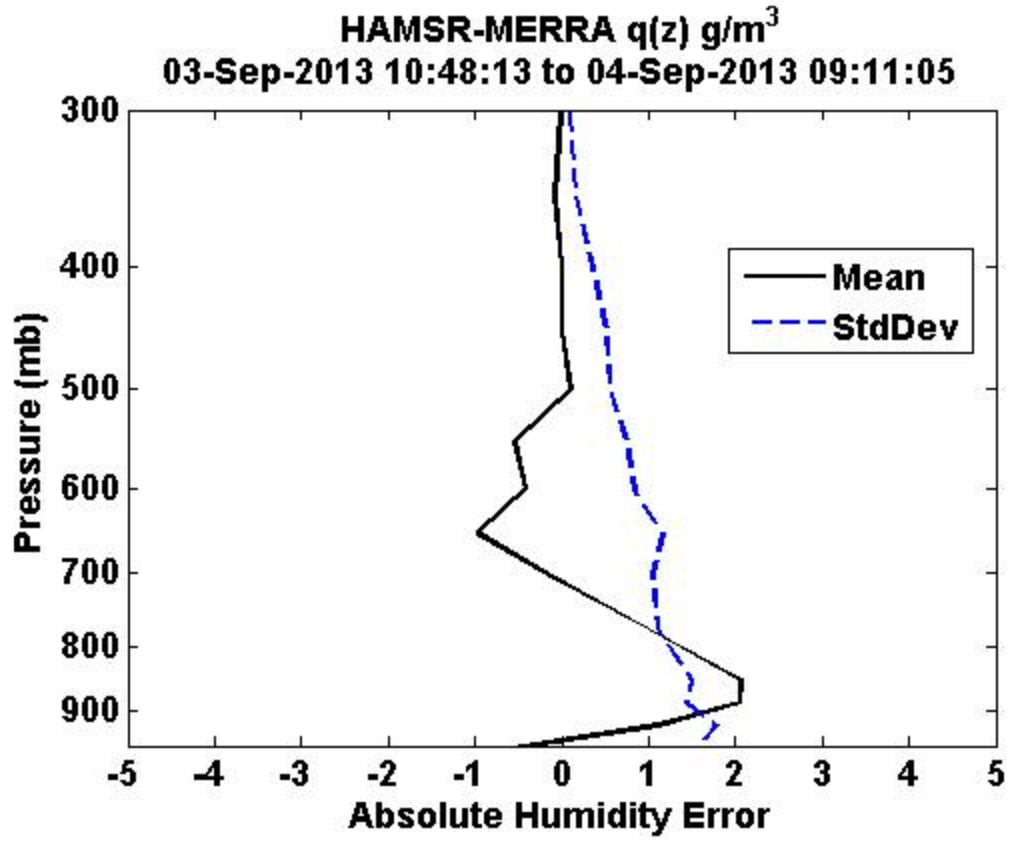
HAMSR-MERRA T(z) °C
03-Sep-2013 10:48:13 to 04-Sep-2013 09:11:05



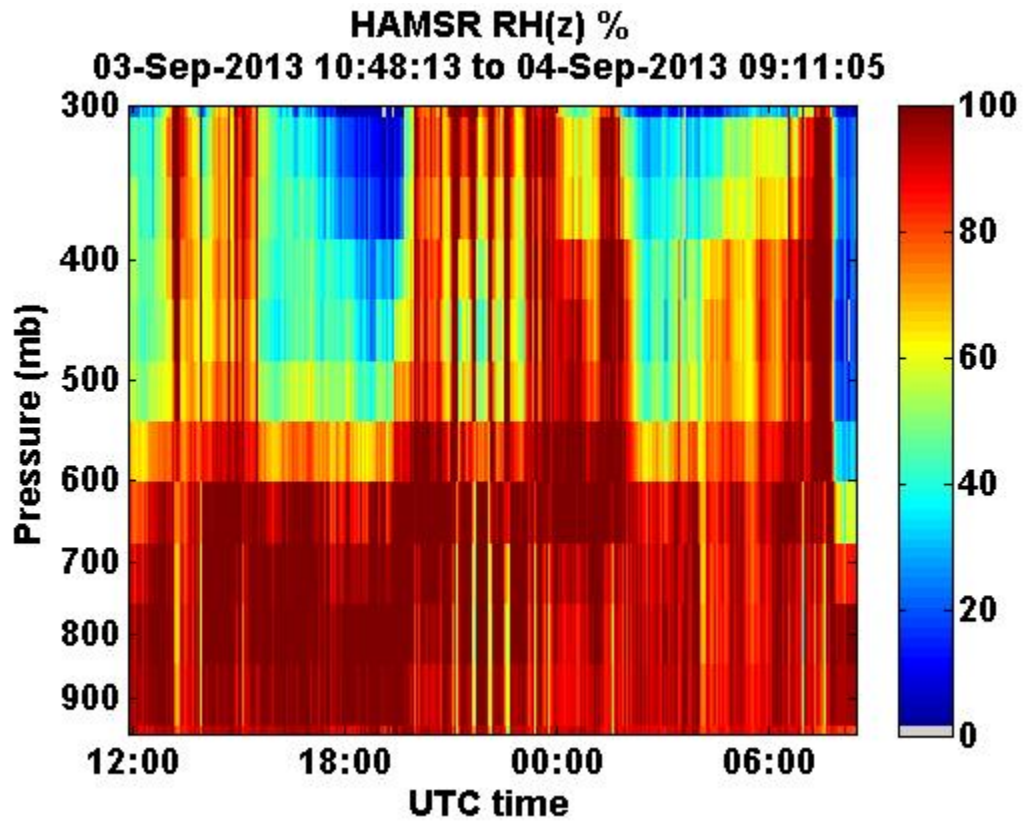
Absolute Humidity with MERRA

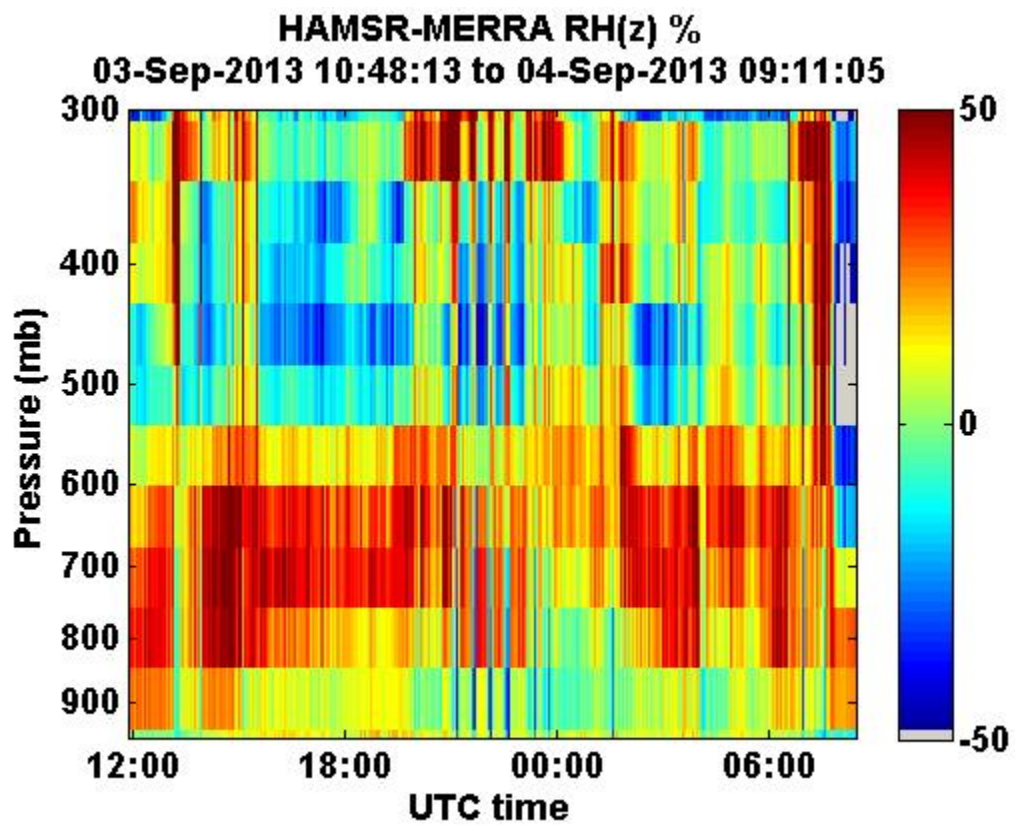
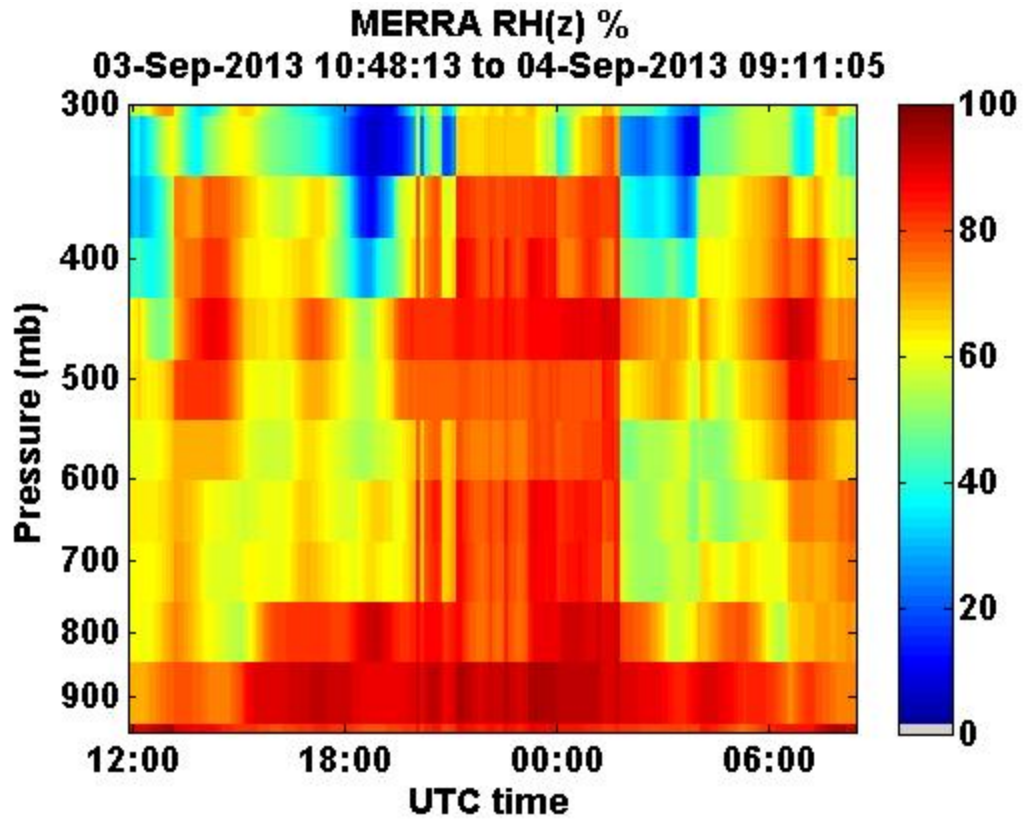


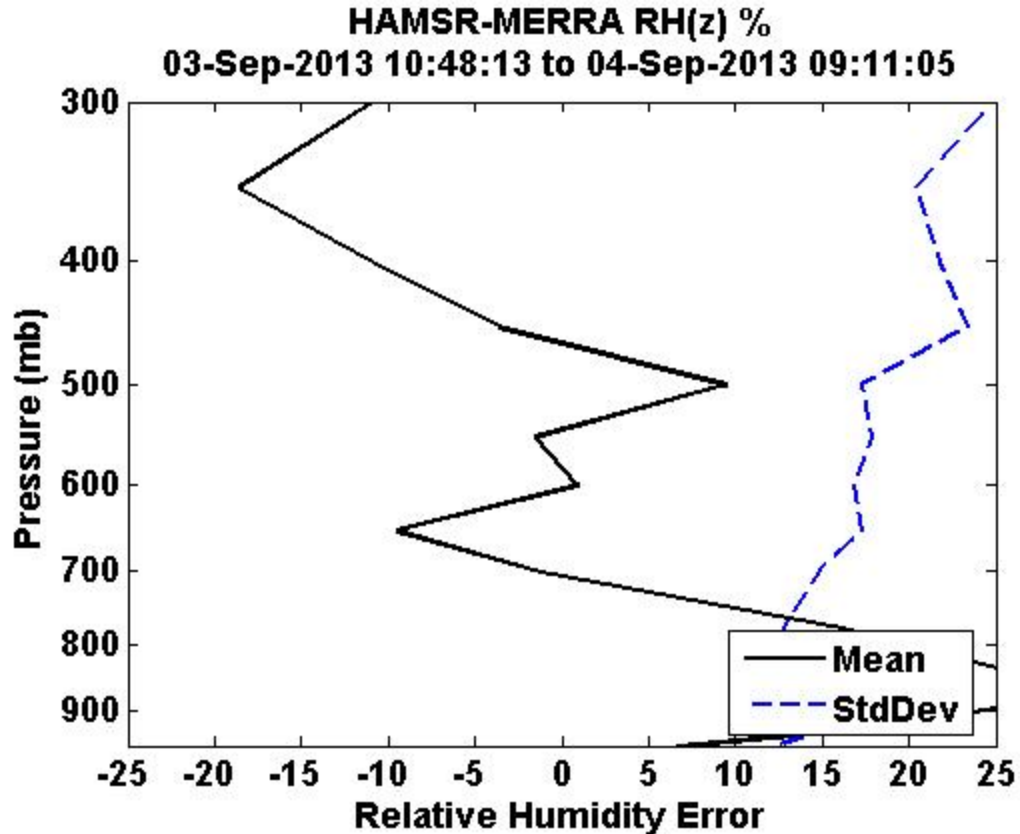




Relative Humidity with MERRA







Dropsonde comparisons

Dropsonde locations

Temperature with Dropsondes

Absolute Humidity with Dropsondes

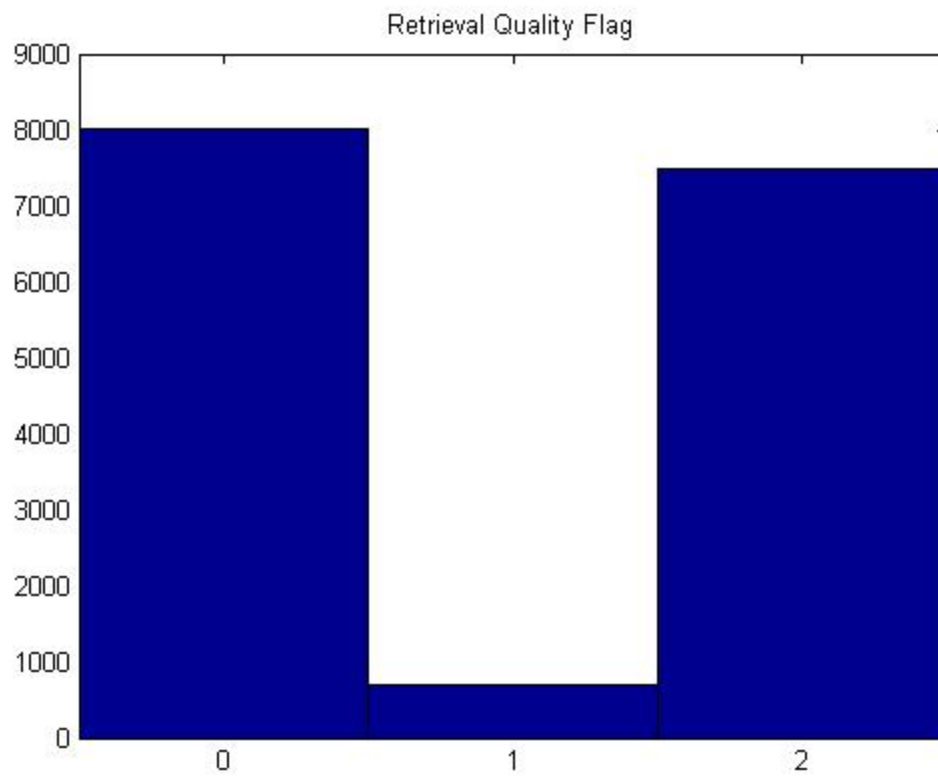
Relative Humidity with Dropsondes

All Dropsonde Comparisons

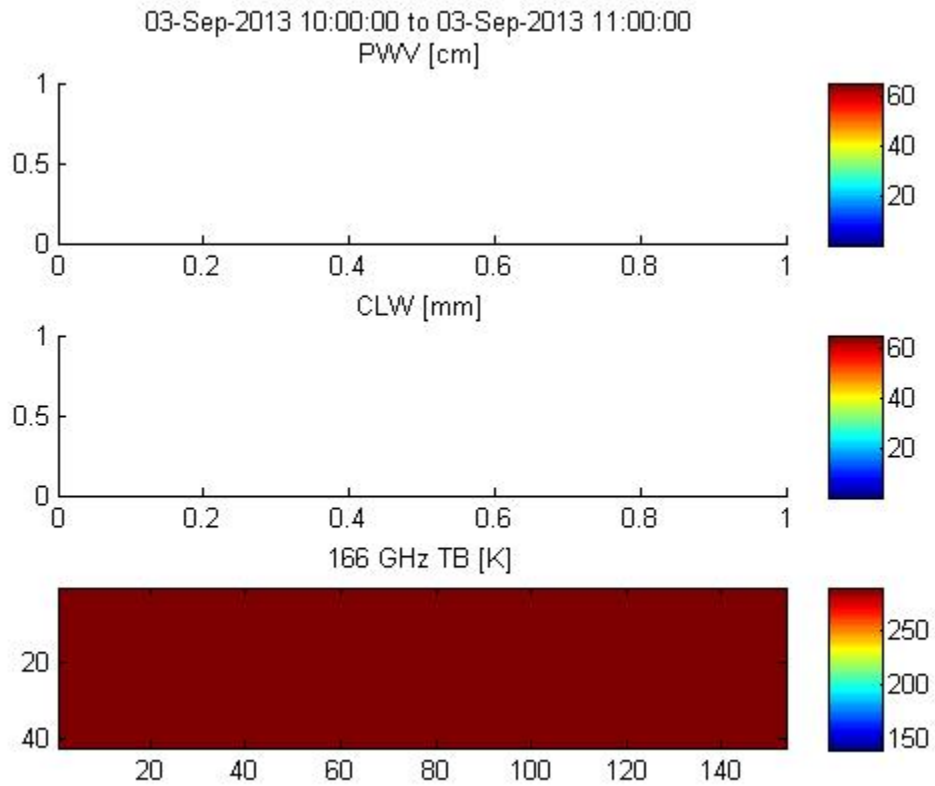
*0 total dropsondes co-located
 No co-located dropsondes found for this flight*

Retrieval Quality Flag Statistics

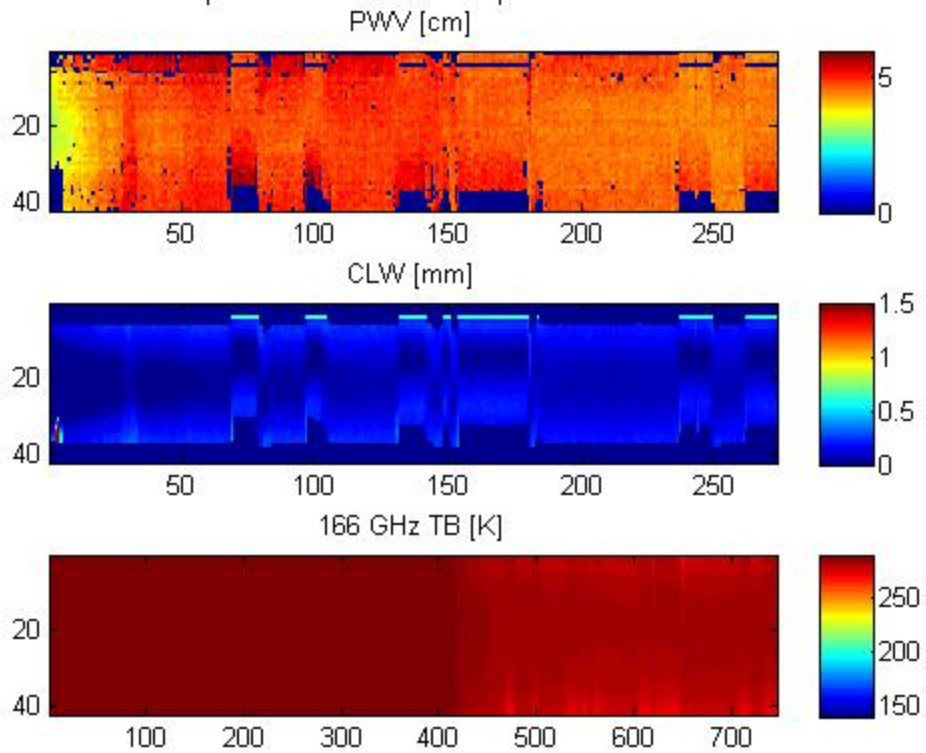
*49.4971% with retrieval quality flag of 0
 4.35% with retrieval quality flag of 1
 46.1529% with retrieval quality flag of 2*



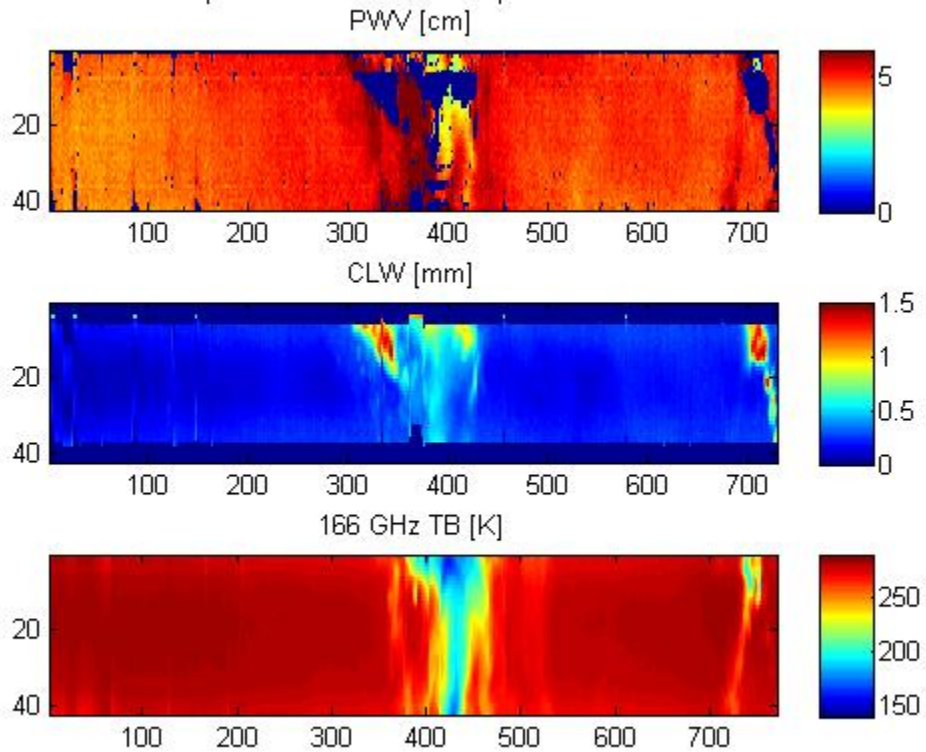
Flight Imagery



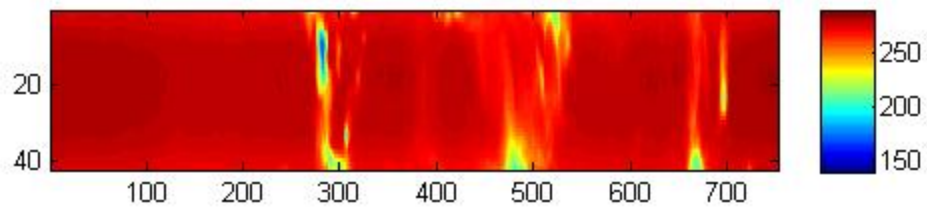
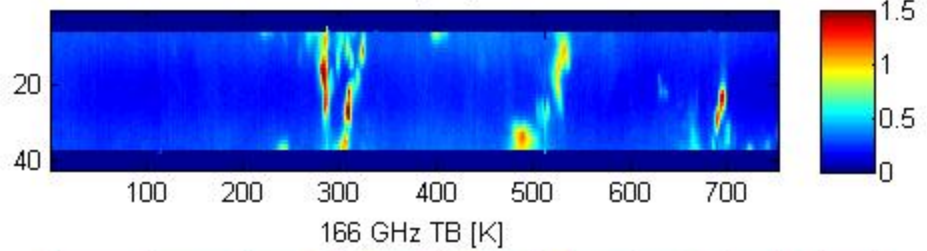
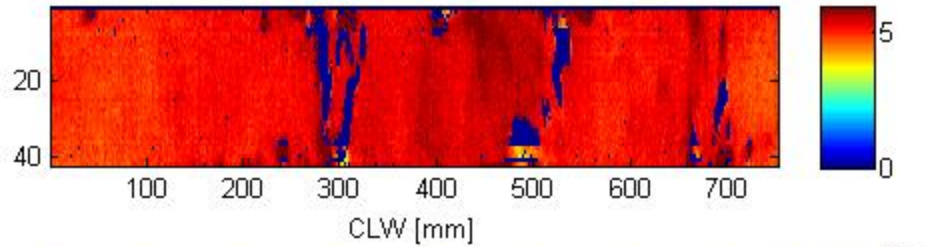
03-Sep-2013 11:00:00 to 03-Sep-2013 12:00:00



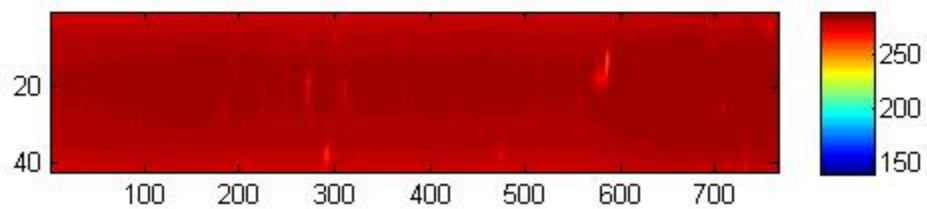
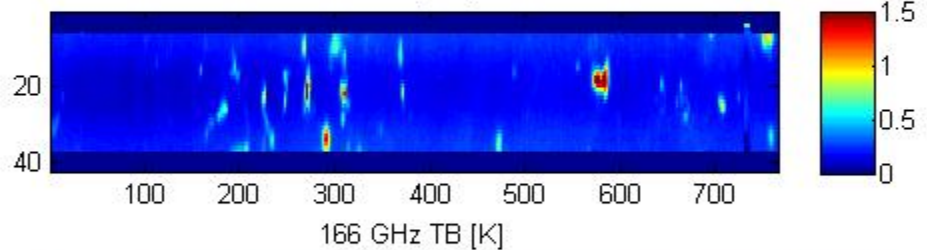
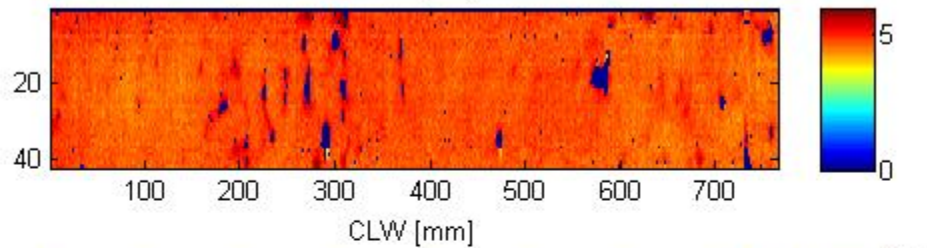
03-Sep-2013 12:00:00 to 03-Sep-2013 13:00:00



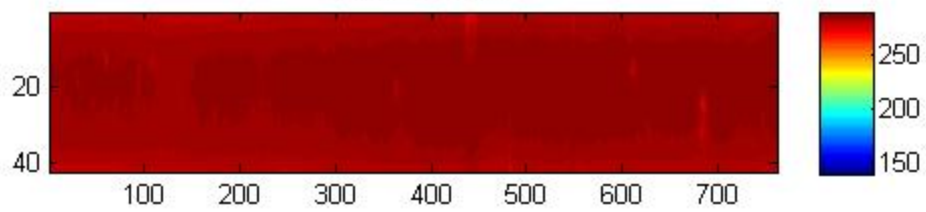
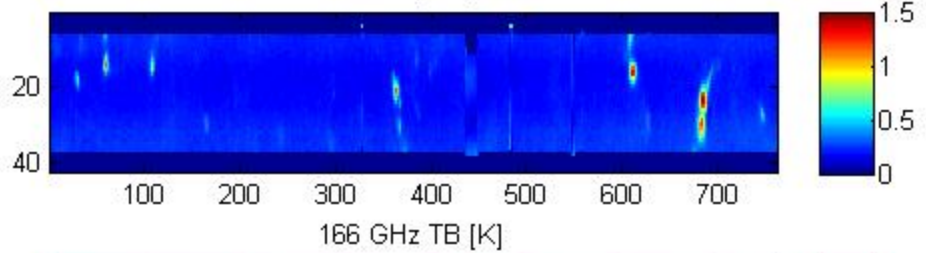
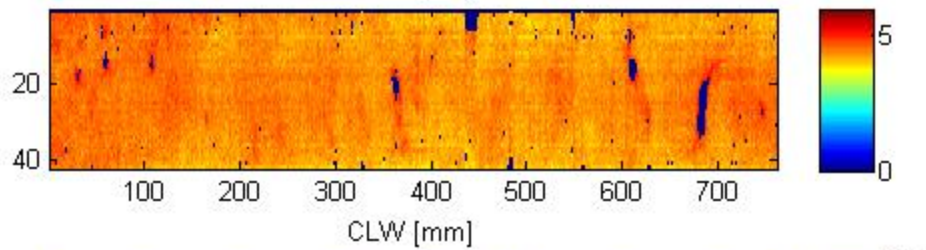
03-Sep-2013 13:00:00 to 03-Sep-2013 14:00:00
PWV [cm]



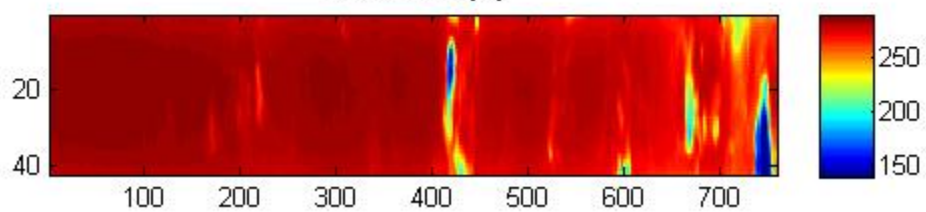
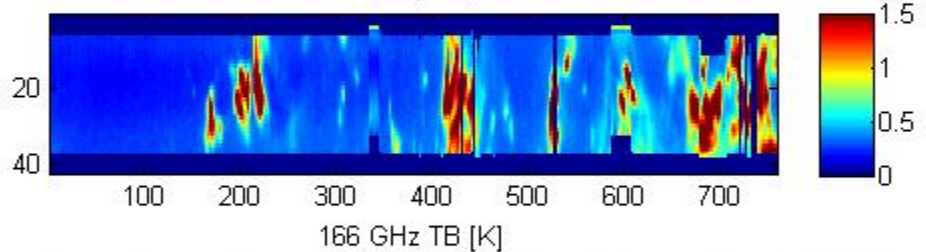
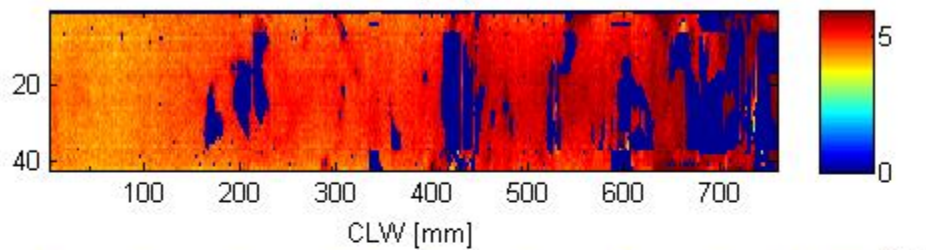
03-Sep-2013 14:00:00 to 03-Sep-2013 15:00:00
PWV [cm]



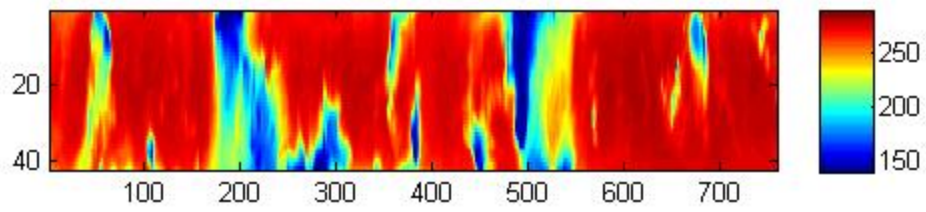
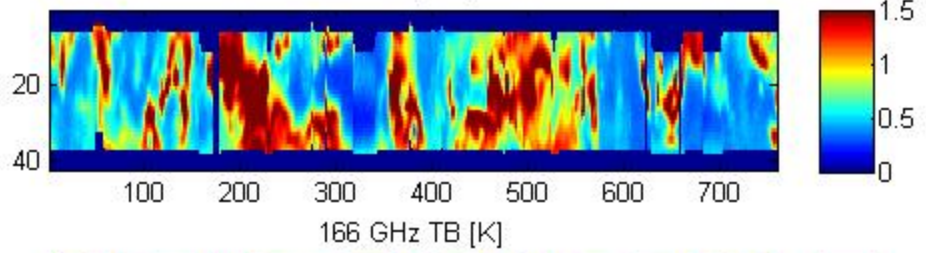
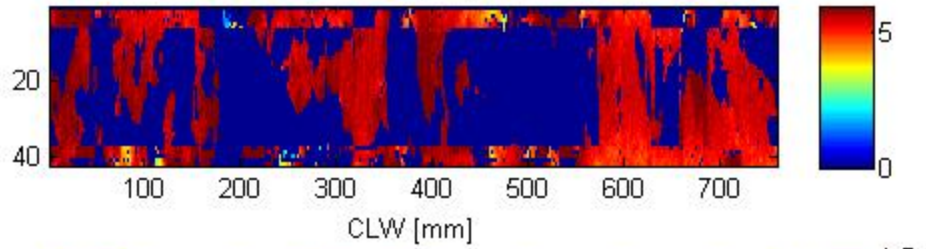
03-Sep-2013 15:00:00 to 03-Sep-2013 16:00:00
PWV [cm]



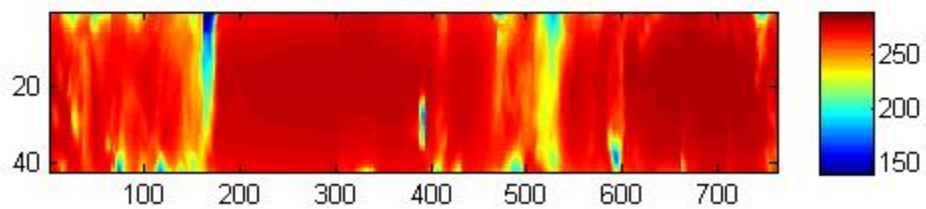
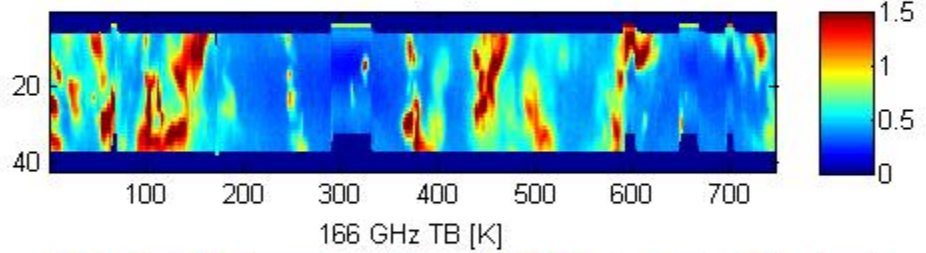
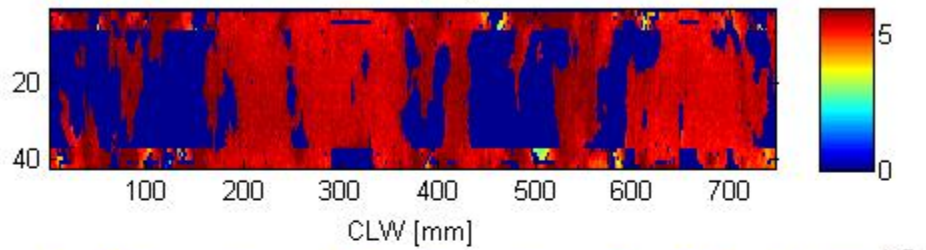
03-Sep-2013 16:00:00 to 03-Sep-2013 17:00:00
PWV [cm]



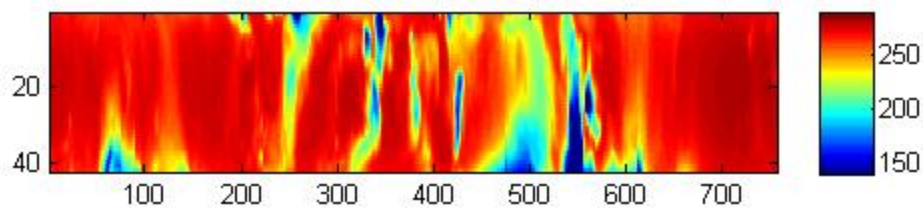
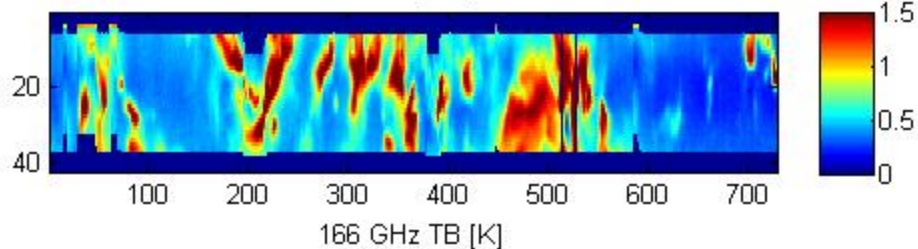
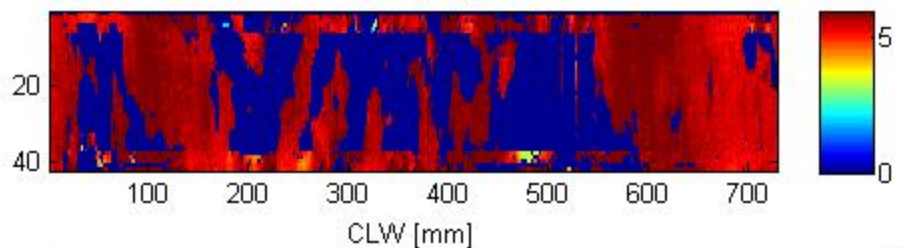
03-Sep-2013 17:00:00 to 03-Sep-2013 18:00:00
PWV [cm]



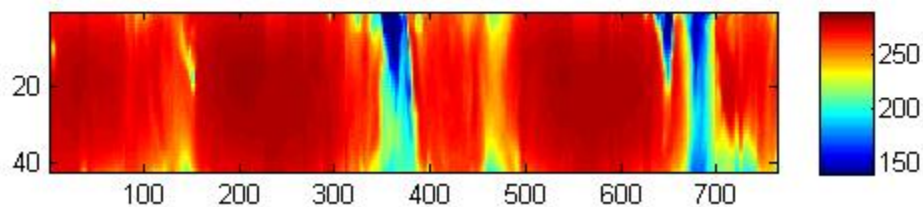
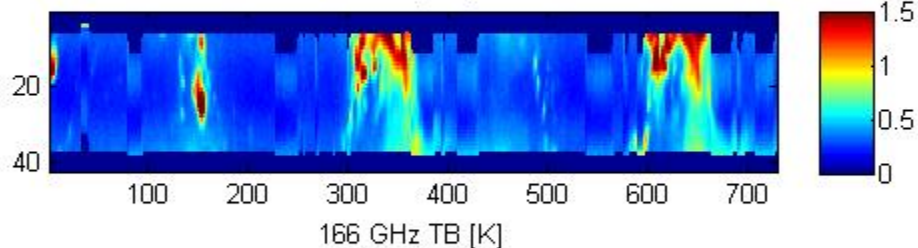
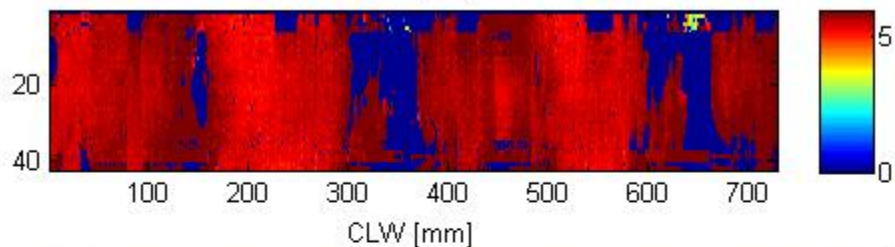
03-Sep-2013 18:00:00 to 03-Sep-2013 19:00:00
PWV [cm]



03-Sep-2013 19:00:00 to 03-Sep-2013 20:00:00
PWV [cm]

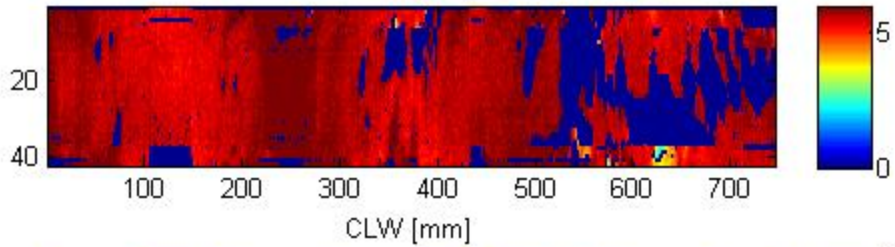


03-Sep-2013 20:00:00 to 03-Sep-2013 21:00:00
PWV [cm]

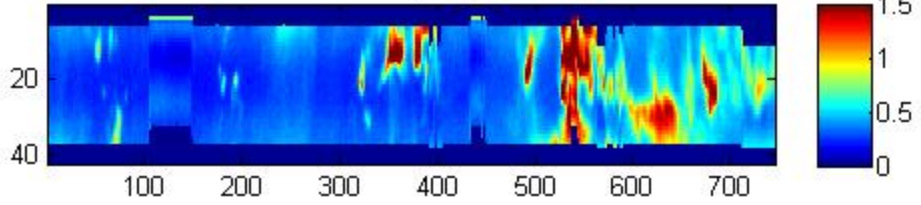


03-Sep-2013 21:00:00 to 03-Sep-2013 22:00:00

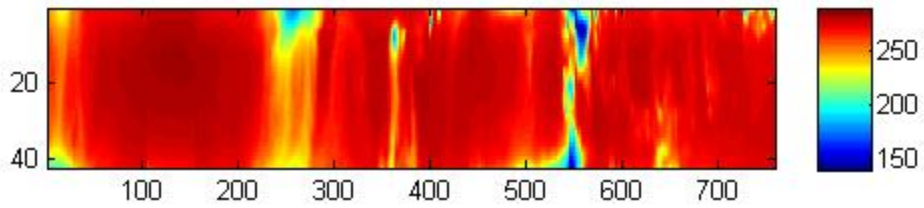
PWV [cm]



CLW [mm]

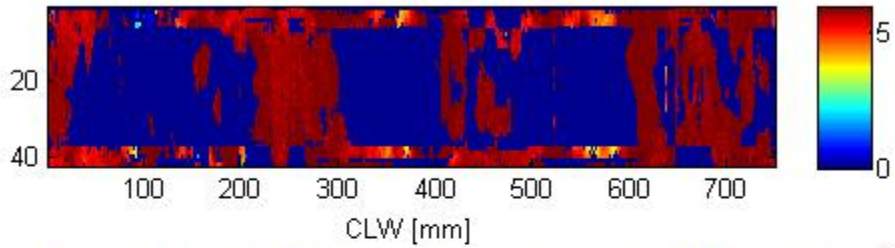


166 GHz TB [K]

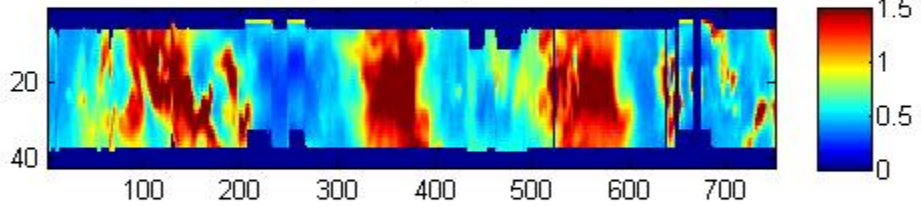


03-Sep-2013 22:00:00 to 03-Sep-2013 23:00:00

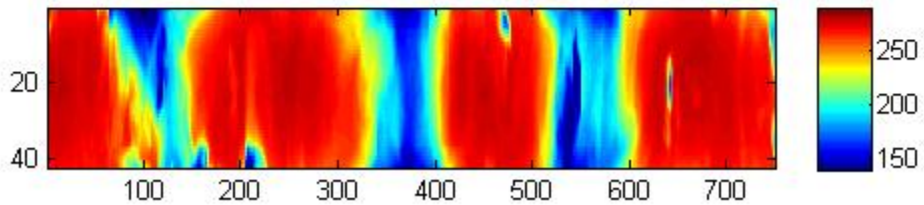
PWV [cm]



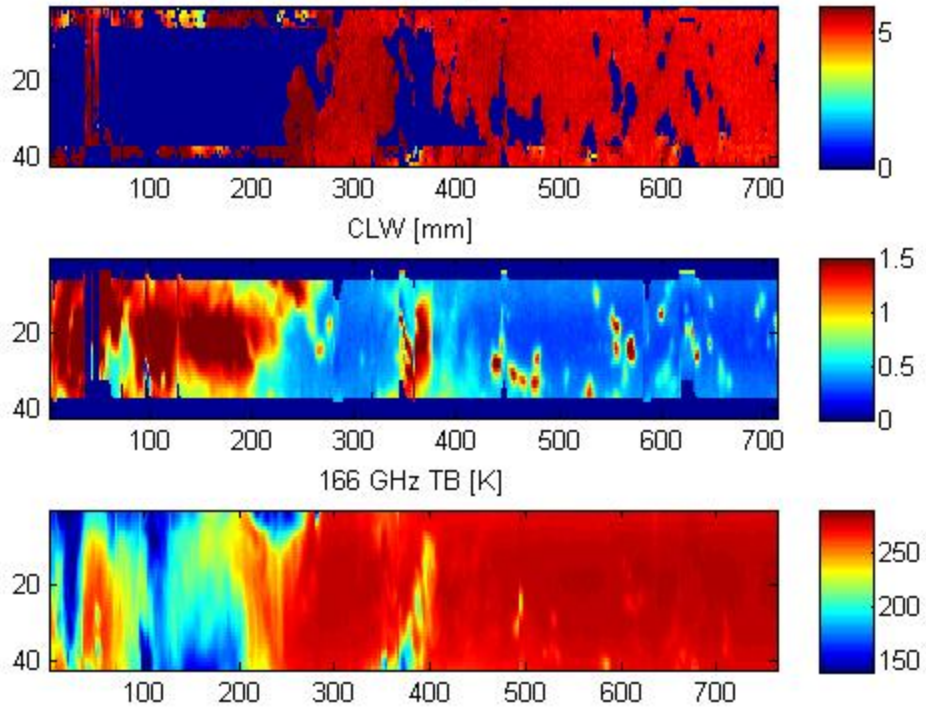
CLW [mm]



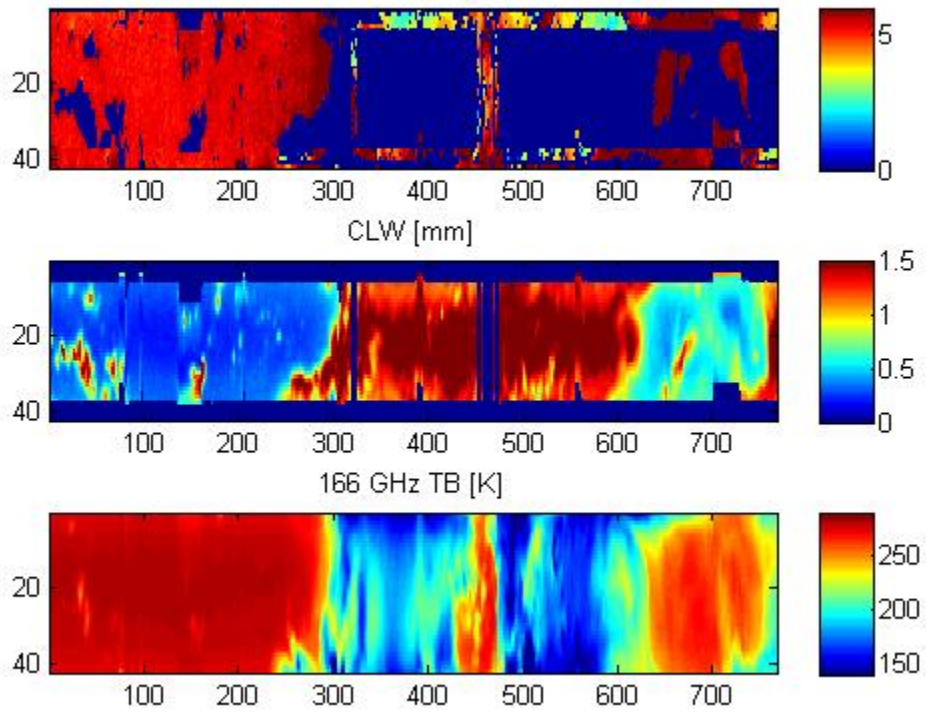
166 GHz TB [K]



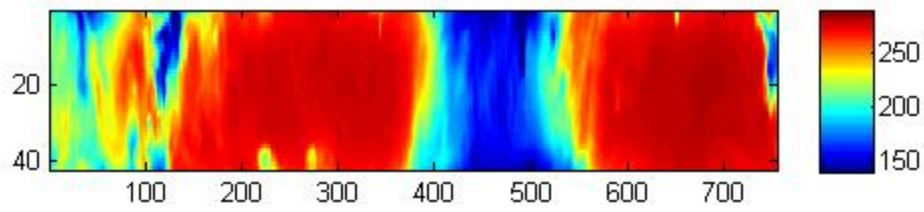
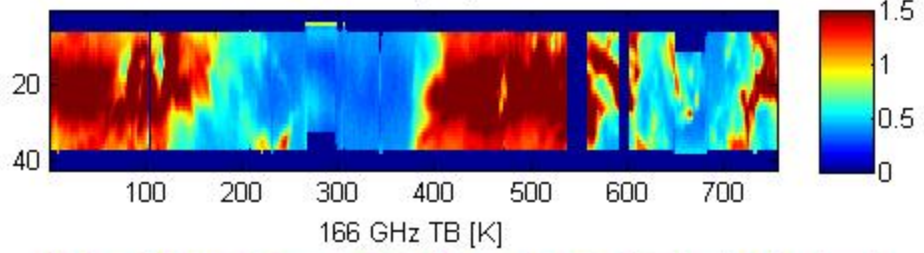
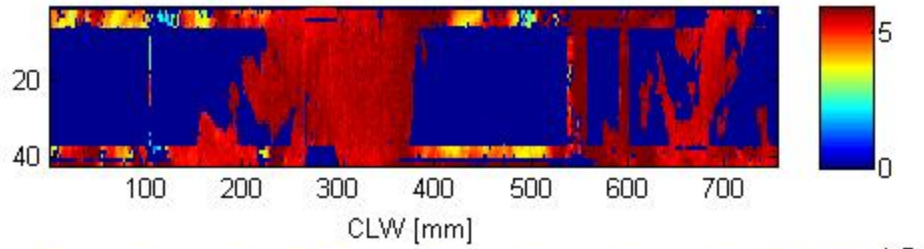
03-Sep-2013 23:00:00 to 04-Sep-2013
PWV [cm]



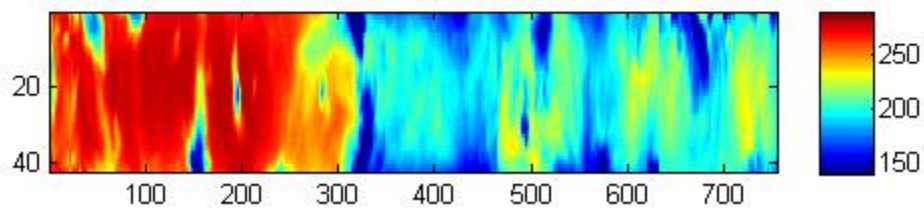
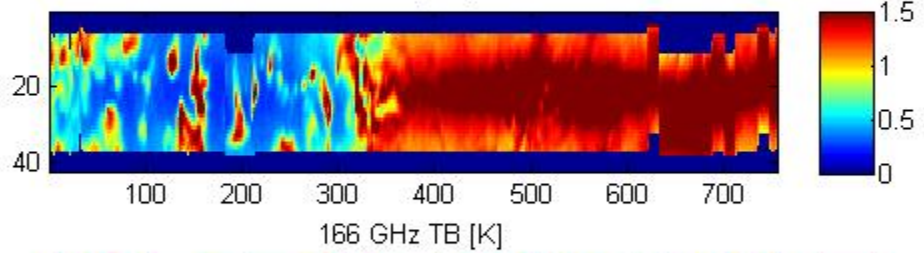
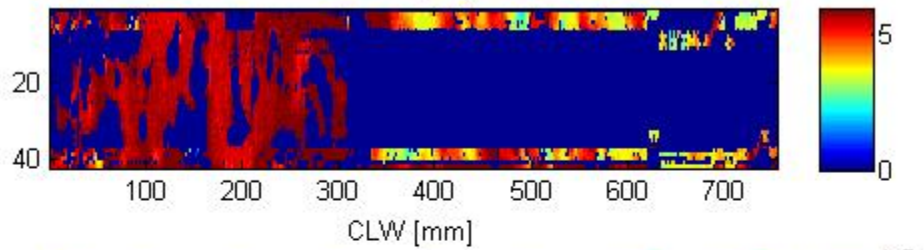
04-Sep-2013 to 04-Sep-2013 01:00:00
PWV [cm]



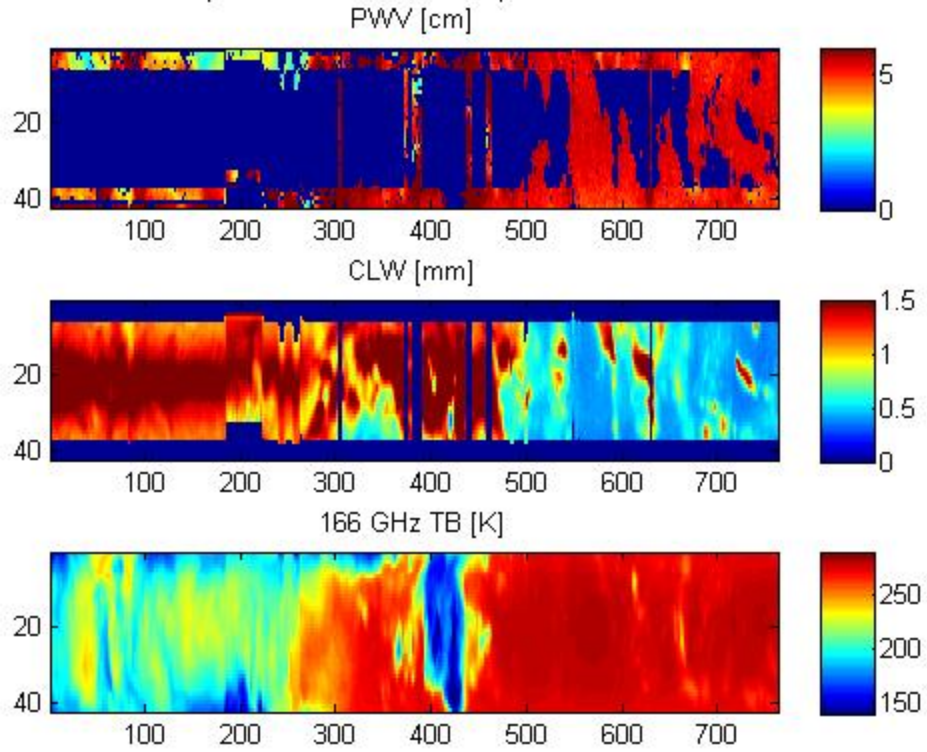
04-Sep-2013 01:00:00 to 04-Sep-2013 02:00:00
PWV [cm]



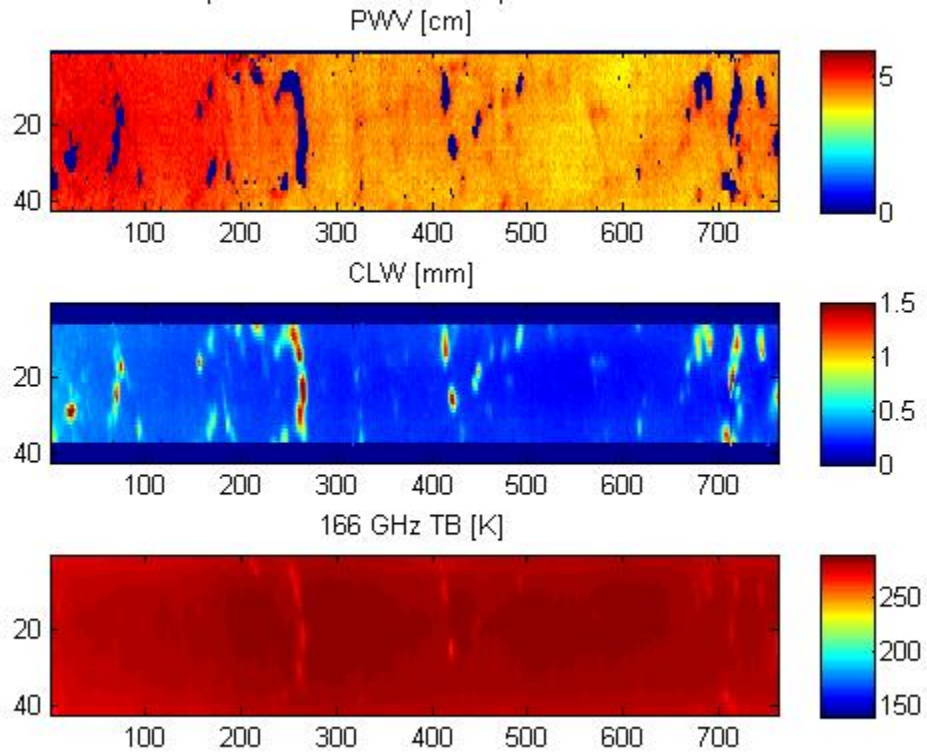
04-Sep-2013 02:00:00 to 04-Sep-2013 03:00:00
PWV [cm]



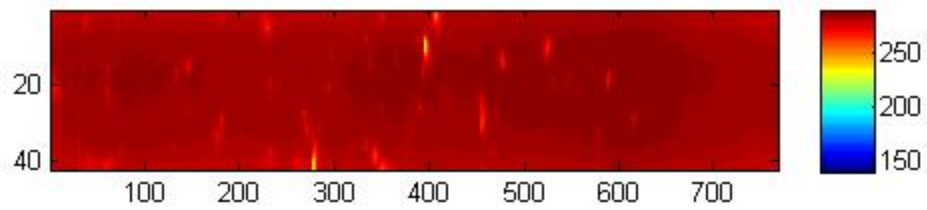
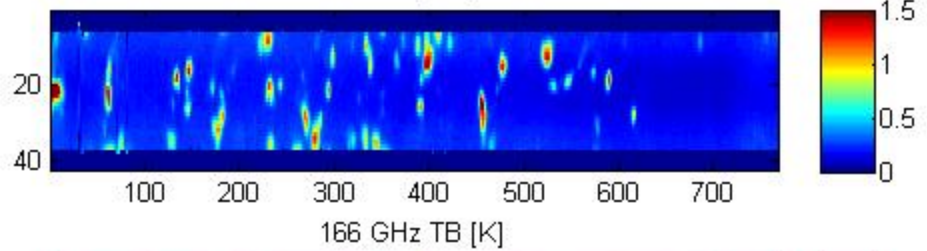
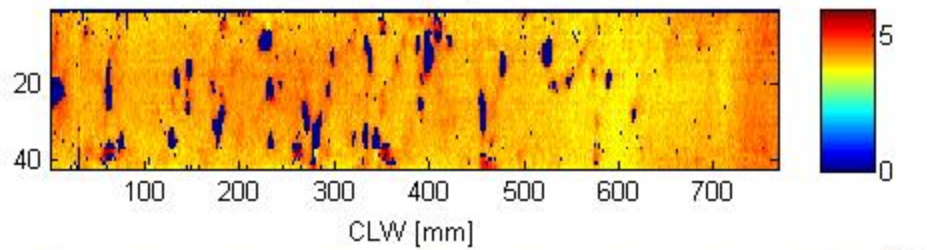
04-Sep-2013 03:00:00 to 04-Sep-2013 04:00:00



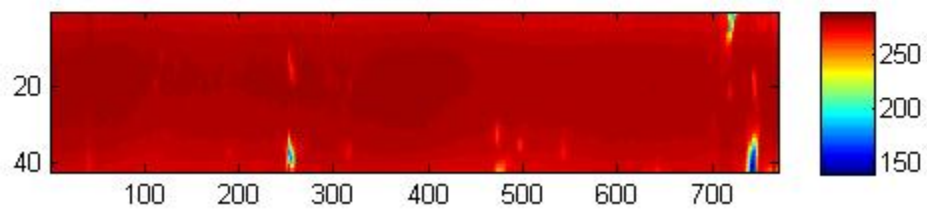
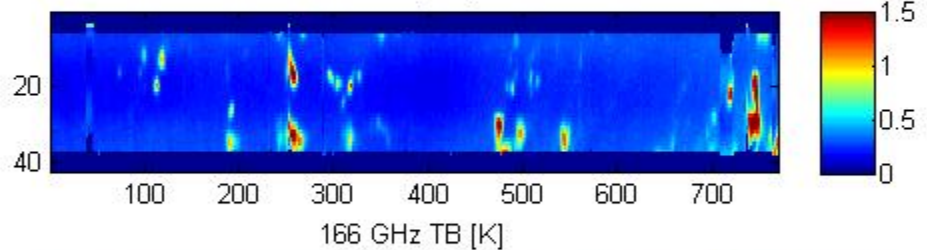
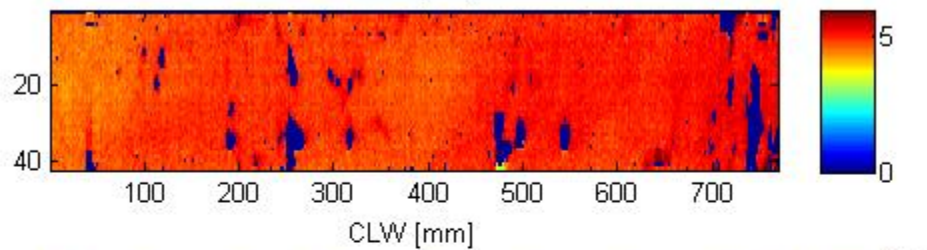
04-Sep-2013 04:00:00 to 04-Sep-2013 05:00:00



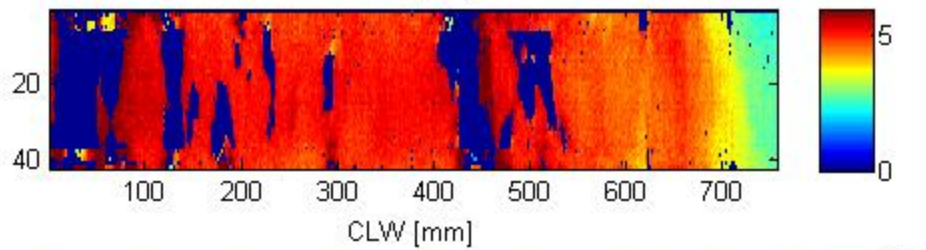
04-Sep-2013 05:00:00 to 04-Sep-2013 06:00:00
PWV [cm]



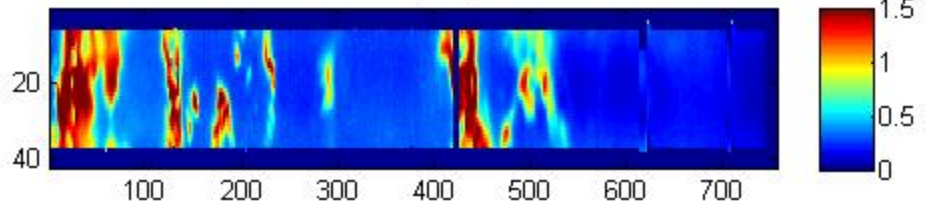
04-Sep-2013 06:00:00 to 04-Sep-2013 07:00:00
PWV [cm]



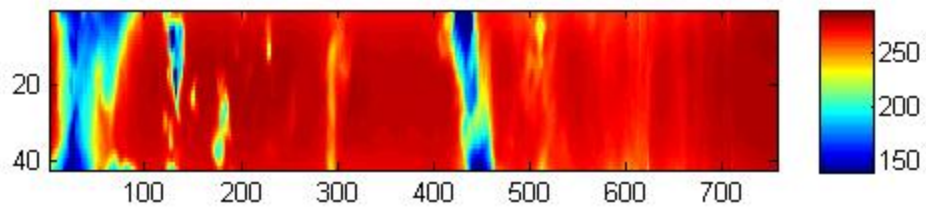
04-Sep-2013 07:00:00 to 04-Sep-2013 08:00:00
PWV [cm]



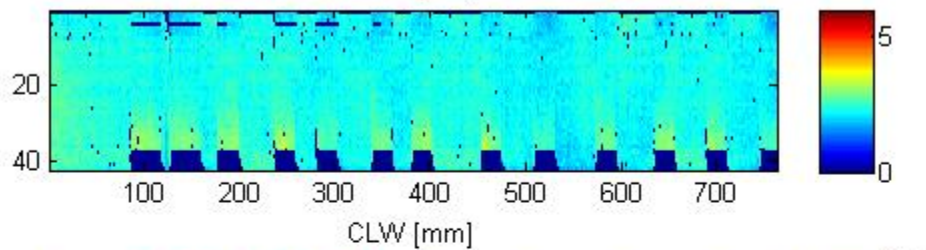
CLW [mm]



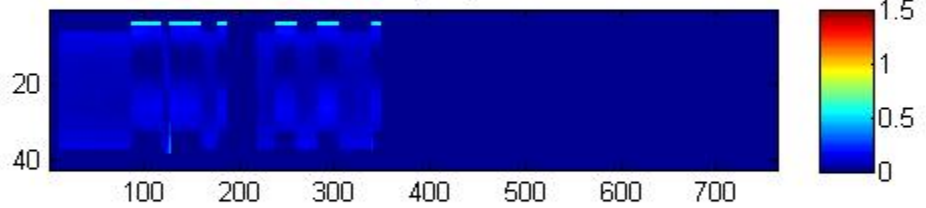
166 GHz TB [K]



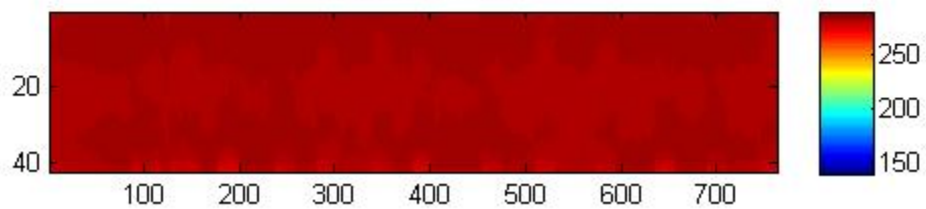
04-Sep-2013 08:00:00 to 04-Sep-2013 09:00:00
PWV [cm]



CLW [mm]



166 GHz TB [K]



*Copyright 2013 California Institute of Technology.
Government sponsorship acknowledged.*

Published with MATLAB® R2013a