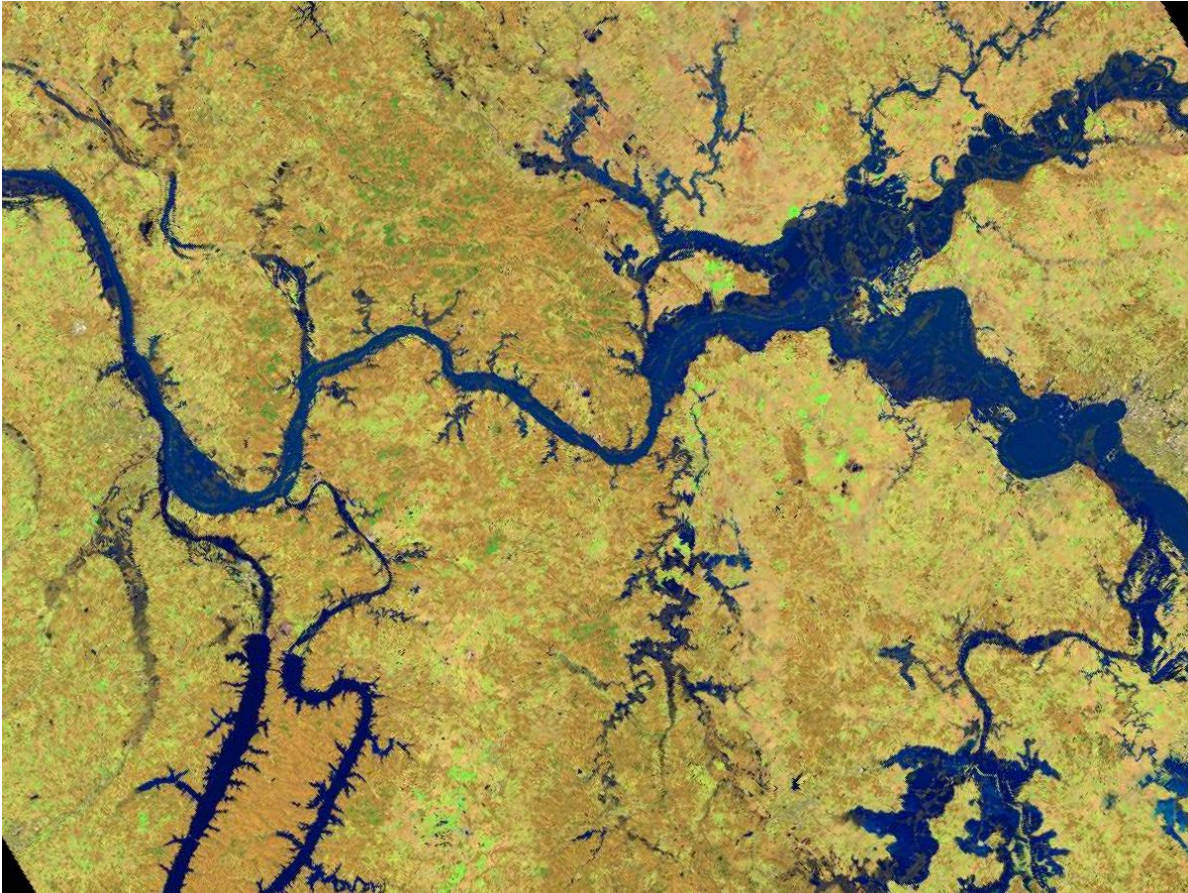




## June 2026 Newsletter

NASA Applied Remote Sensing Training (ARSET) Program



Landsat-8 image of floodwaters at the confluence of the Wabash and Ohio rivers. Credit: [NASA Earth Observatory image by Joshua Stevens](#)

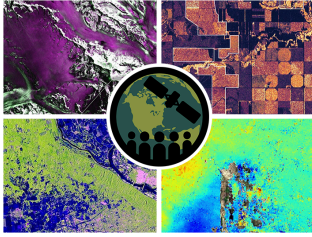
Like our new look? With our new platform, you will get the same training updates and newsletters from us but with a different look from now on. You can also receive training announcements for English trainings, Spanish trainings, or both from now on. By default, current subscribers will continue to receive both English and Spanish training announcement emails. This quarterly newsletter will remain English-only at this time, but will be sent to both lists. You may adjust your subscription preferences using the menu at the bottom of this email.

Since our last quarterly newsletter, ARSET launched a [Spanish](#) version of our popular [Fundamentals of Remote Sensing](#) self-paced course. In addition, we hosted two in-person workshops at the International Smoke Symposium and National Shellfisheries Association's 118th Annual Meeting. We also hosted three online, instructor-led trainings: [Monitoring Water Quality in Lakes and Coastal Regions Using STREAM](#); [Visualizing Land Cover and Land Use Change with NASA Satellite Imagery](#); and [Monitoring Groundwater Changes for Water Resources Management](#).

Our next live training will be [Monitoring and Predicting Floods Using Earth Observations for Planning and Preparedness](#), running June 18th, 23rd, and 25th. The training will provide an overview of flood monitoring tools and a streamflow prediction tool to improve flood preparedness and response planning.

As always, If you have ideas for trainings you'd like to see, please share them through our [contact form](#). Your input matters!

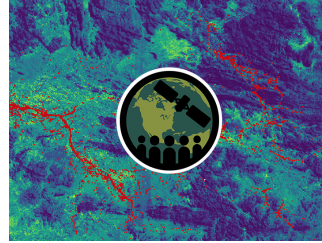
## Upcoming Trainings



### [NISAR: Next-Generation Radar Observations for Earth Applications](#)

July 2-16, 2026

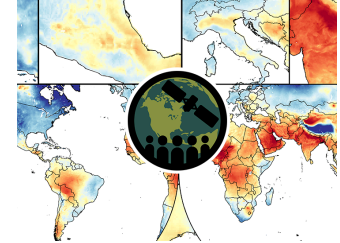
This bilingual ARSET training introduces users to the characteristics and data of the NISAR mission and demonstrates workflows for accessing, visualizing, and analyzing the data for a range of applications.



### [Species Distribution Modeling with Google Earth Engine](#)

July 7-14, 2026

This ARSET training introduces key concepts in species distribution modeling and provides example workflows in Google Earth Engine.



### [Estimating Surface PM2.5 Using Satellite Data and Other Information Sources](#)

July 8-22 2026

This bilingual ARSET training covers the theoretical approaches and key datasets to estimate historical PM2.5 from satellite aerosol optical depth.

## ARSET Behind-the-Scenes

In April, the ARSET team came together for an annual team retreat. Our team consists of coordinators, instructional designers, communicators, and, of course, the trainers, all of whom have a hand in producing the trainings that reach you. The retreat focused on team building, coordination, communication, instructional design, and strategic planning.



ARSET team members pose for a group picture at their retreat.

## Additional Resources



## Gain Applied Science Experience with the EarthRISE Developers Academy

The EarthRISE Developers Academy has opened applications for their Fall cohort, running September 14th to November 20th. The Academy allows participants to apply NASA Earth observations to real-world challenges. Those accepted into the program will use NASA mission data to create innovative applied science solutions, that boost efficiency and resilience for key partners and support the demands of an actively growing geospatial workforce. Working with NASA scientists, those selected will benefit from collaborative projects, professional development, and state, local, tribal, territorial, and private partnerships. Applications close June 26th.

Learn more and apply [here](#).



## Elevate Your Science Communication with the Earth to Sky Academy

NASA's Earth to Sky (ETS) program is accepting applications for its Fall Virtual Academy until June 30th. The no-cost Academy gives participants the opportunity meet and talk with NASA scientists and communication specialists. It is intended to elevate place-based Earth science interpretation and informal education using NASA science and resources. Participants apply as teams of three to five experienced interpreters, informal educators, and science communicators.

Learn more about the Academy [here](#).



## Chat with a PACE Scientist

The Plankton, Aerosol, Cloud, ocean Ecosystem (PACE) team is running PACE Help Hub Hotline Summer Chats. This is your chance to ask ANY questions and get live support from PACE scientists in a fun, relaxed atmosphere. Three sessions will be offered: General PACE Data Questions, PACE Atmosphere and Land, and PACE Ocean and Freshwater. Each session will feature a brief showcase of a new PACE data tutorial before the Q&A.

Learn more and register [here](#).

---

Was this announcement forwarded to you?

Subscribe to get future announcements directly from ARSET

[Subscribe](#)

---



## NASA Applied Remote Sensing Training (ARSET)

Build skills to use remote sensing data for a range of applications related to air quality, public health, agriculture, disasters, ecological conservation, water resource management and wildland fires.

[Visit our Website](#)



## National Aeronautics and Space Administration

NASA explores the unknown in air and space, innovates for the benefit of humanity, and inspires the world through discovery.

[Visit nasa.gov](https://www.nasa.gov)

Follow NASA



NASA ARSET | 8800 Greenbelt Road | Greenbelt, MD 20771 US

[Unsubscribe](#) | [Update Profile](#) | [Our Privacy Policy](#) | [Constant Contact Data Notice](#)



Try email marketing for free today!